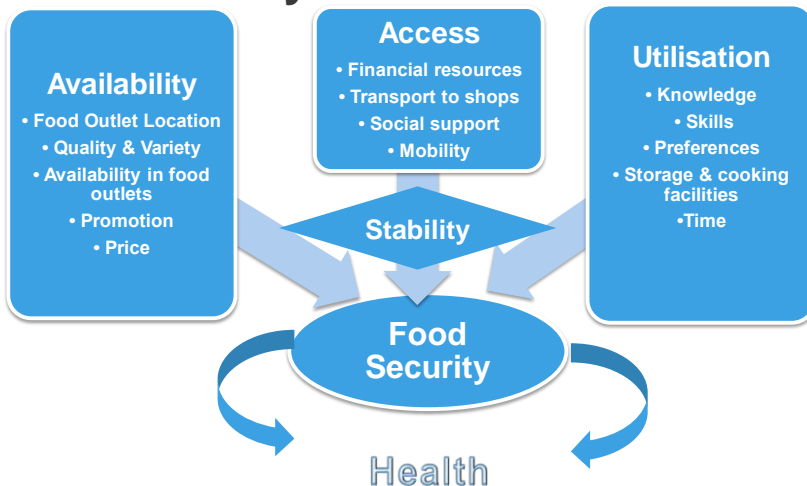
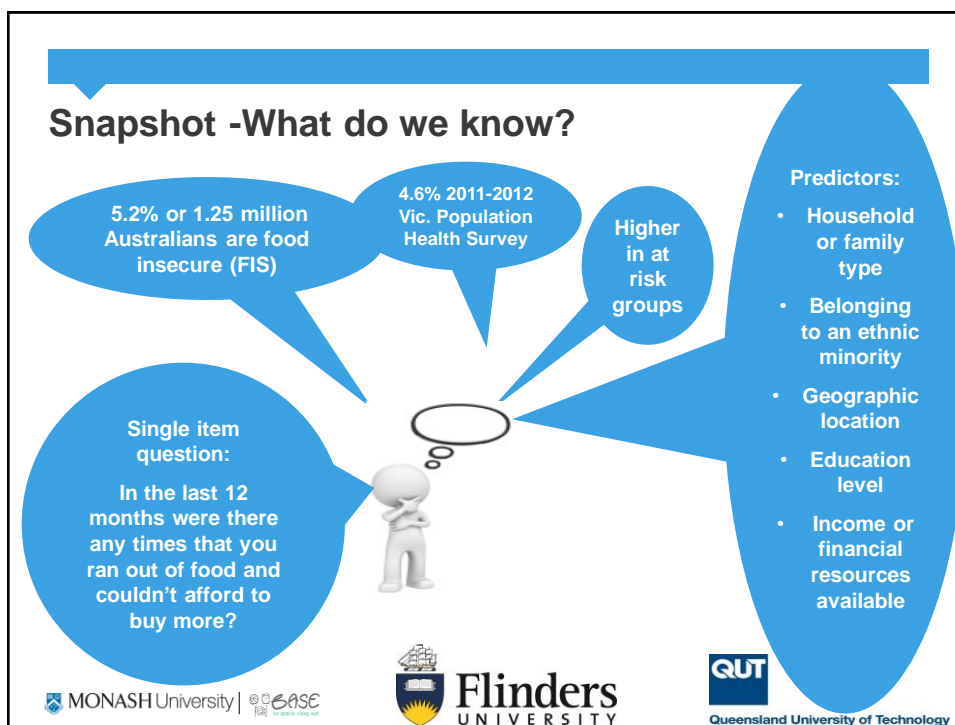


# Food insecurity in Australia what do we know?

Sue Kleve PhD Candidate  
Monash University

## Food Security & its Dimensions





## Food Insecurity & Income

- Food insecurity has an **inverse relationship with income level.**
- Those on a very low income are at risk **but** not all very low income households are food insecure.

**BUT what happens as we move up the income gradient to low to middle income households?**

MONASH University | @EASE

Flinders UNIVERSITY

QUT Queensland University of Technology

## PhD Thesis

# Food insecurity in low to middle income Melbourne households – Implications for policy and practice

MONASH University | @EASE



## Part 1 Exploring existing data

- Data from Victorian Department of Health Victorian Population Health Survey (VPHS) **2006-2010.**
- Examine the existence of food insecurity and food insecurity associations in the household income group **\$40,000 - \$60,000.**

MONASH University | @EASE



## Victorian Population Health Survey (VPHS)

- State wide annual survey - Information on the health & wellbeing of the population to inform policy & planning.
- Collects data on food security across income groups.
- Provides annual measure of population level food security in Victoria.
- “In the last 12 months were there any times that you ran out of food and couldn’t afford more?”

## VPHS Analysis

- Data from **each year 2006-2010 in \$40,000-\$60,000 household income per annum category.**
- Explore
  - Stacked bar graphs to explore relationships to income
  - Descriptive statistics to describe respondents
  - Binary logistic regression – 3 key dependent variable to explore associations.
- Analysis of 3 key variables:
  1. **Ran out of food in the last 12 months and couldn’t afford more**
  2. Ability to raise \$2000 in an emergency in 2 days
  3. Can’t get the food wanted due to its expense

## Relationship FIS & household income



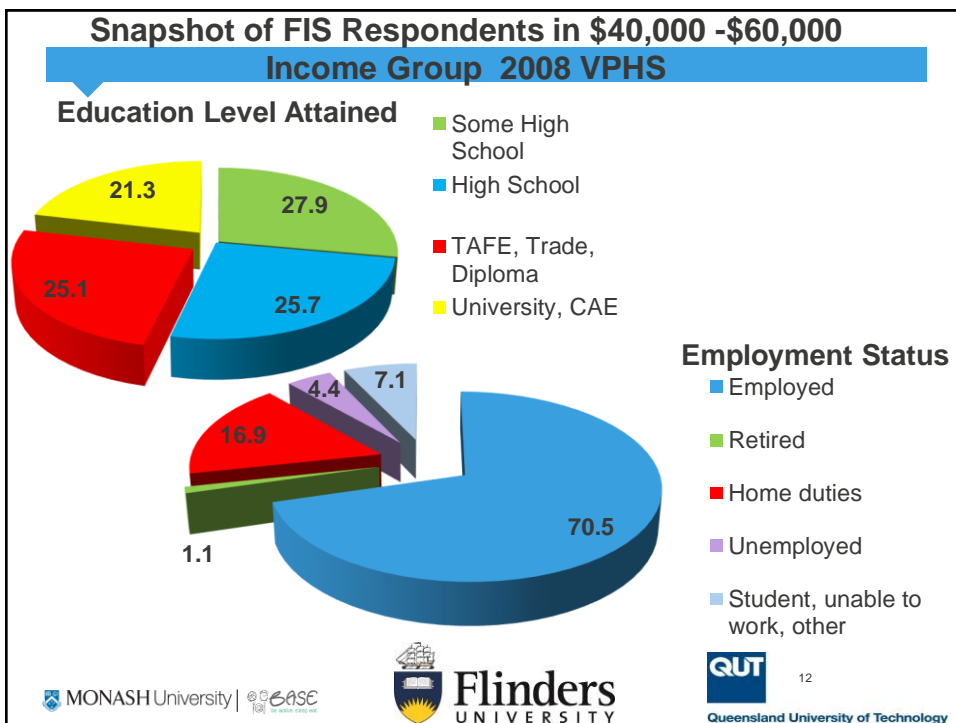
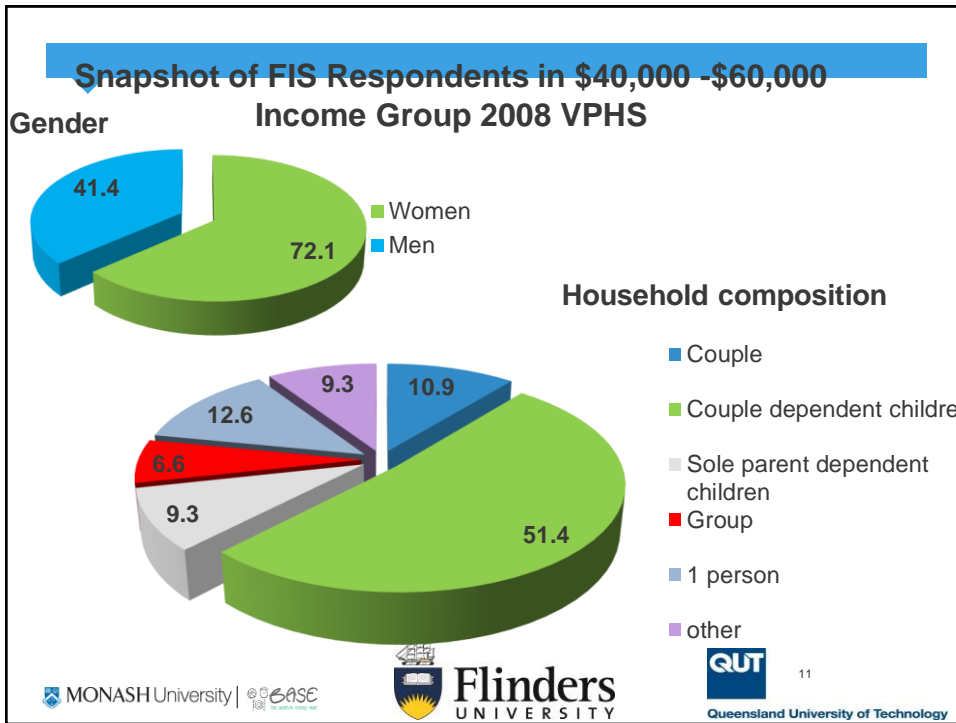
Stacked bar graph 2008 VPHS food insecurity according to VPHS household annual income category.

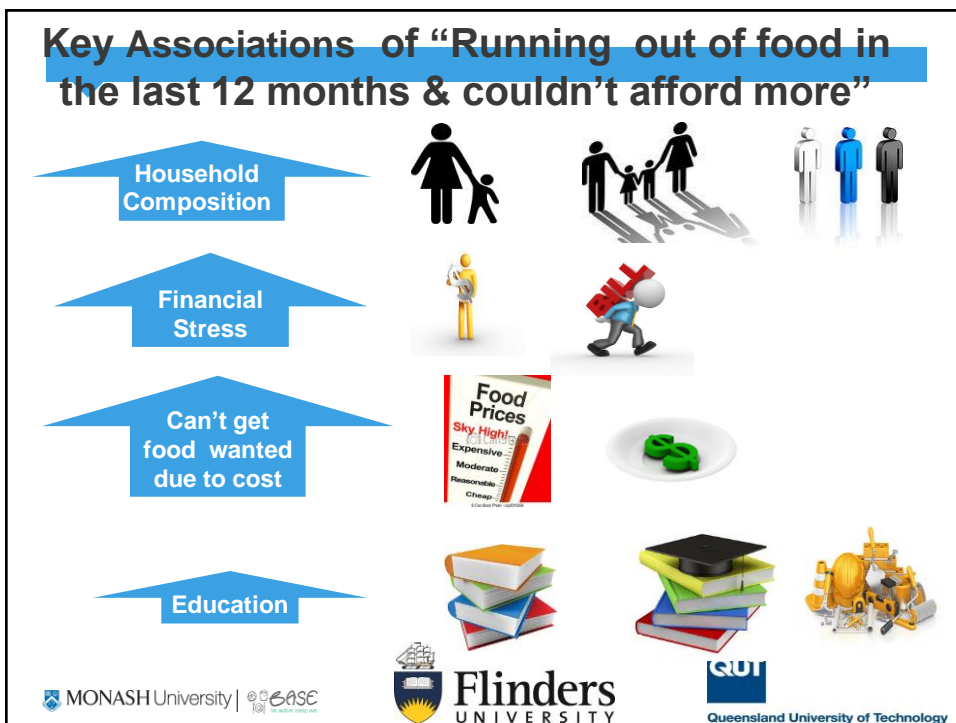
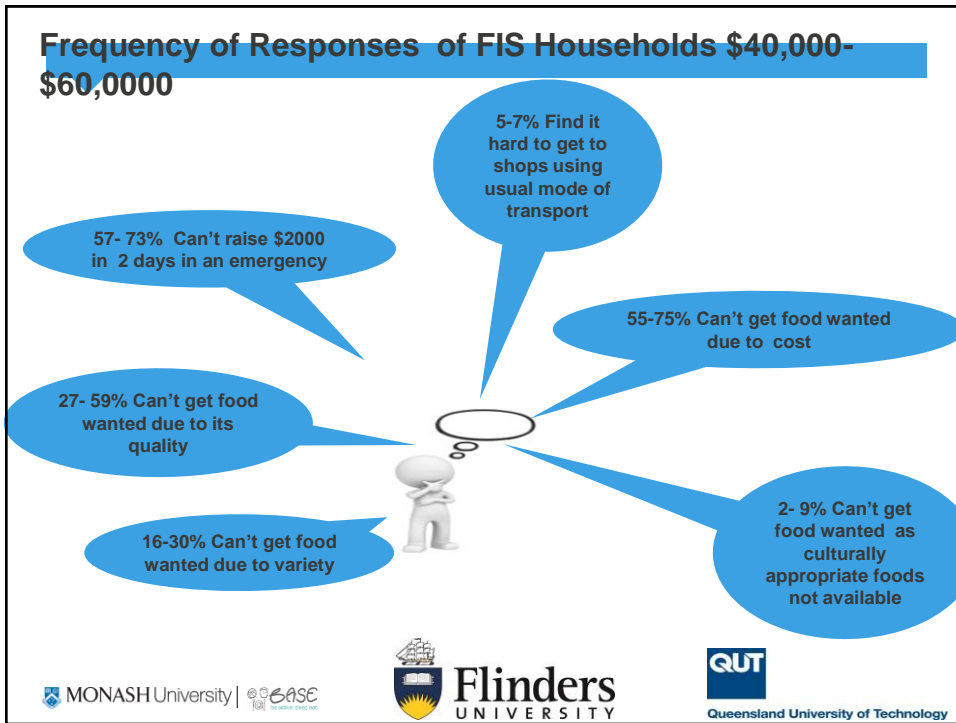
Valid n =34,112



VPHS	Valid Percent				
	2006	2007	2008	2009	2010
Food Insecurity - total (all income groups)	4.9	5.1	5.6	5.4	3.5
Number of respondents in \$40,000-\$60,000 income	n= 1111	n=1070	n=4324	n=1058	n=990
Food Insecurity	4.0	4.1	4.2	4.1	2.7
Frequency of food insecurity					
• Once a week or more	7.0	2.3	5.5	4.8	3.7
• Once every two weeks	18.6	4.7	5.0	11.9	25.9
• Once a month	11.6	9.3	17.7	26.2	22.2
• Less than once a month	62.8	83.7	71.8	57.1	48.1







## What do we know about FIS?

Who is experiencing it?

What are we seeing?

Where are we seeing it?

How are patterns changing?